



HERITAGE X



Our HERITAGE X range is a contemporary take on the popular mannequin-bust hybrid. These mannequins are not only visually striking, but practical tools for displaying clothing. Make HERITAGE X your own by selecting your favorite material for the torso and color for the arms and legs. Customize these poses even further by adding articulated wooden arms which are available in a variety of colors. With HERITAGE X, the possibilities are endless.

HERITAGE X



HRTM-04
Wooden arms

HRTM-02
Wooden arms

HRTM-06
Wooden arms



HRTM-01
Wooden arms

HRTM-08
Wooden arms



HRTM-05
Wooden arms



HRTM-07
Wooden arms
incl. intake for safety steel cord



Fabric covered head
Bob-201020
Natural cotton beige

Wooden head
Caven-201021
Beech wood original

Measurements	EU	US
Height	188 cm	74"
Chest	96 cm	38"
Waist	79 cm	31"
Hip	95 cm	37.5"
Collar	37 cm	14.5"

Measurements HRTM-05	EU	US
Height	192 cm	75.5"
Chest	95,5 cm	37.5"
Waist	78 cm	30"
Hip	95 cm	37.5"
Collar	39 cm	15"

HERITAGE X



HRTM-04
FRP arms

HRTM-03
FRP arms



HRTM-02
FRP arms

HRTM-08
FRP arms

HRTM-06
FRP arms



HRTM-01
FRP arms

HRTM-05
FRP arms



HRTM-07
FRP arms
incl. intake for safety steel cord



Fabric covered head
Bob-201020
Natural cotton beige

Wooden head
Caven-201021
Beech wood original



Measurements	EU	US
Height	188 cm	74"
Chest	96 cm	38"
Waist	79 cm	31"
Hip	95 cm	37.5"
Collar	37 cm	14.5"

Measurements HRTM-05	EU	US
Height	192 cm	75.5"
Chest	95,5 cm	37.5"
Waist	78 cm	30"
Hip	95 cm	37.5"
Collar	39 cm	15"

HERITAGE X OPTIONS

Wooden arms



Clear matt 4214 Lotus gray 4215 Lotus raw 4217 Distressed raw 4218 Distressed 4211

Wooden arms



Whitewashed 4209 Antique white 4208 Distressed white 4220 Distressed white-L 4221

Wooden arms



Dark 4201 Black 4206 Antique black 4207 Distressed black 4219

All wooden arms are processed by hand which can cause deviations in surface or color. MOQs apply.

Wire heads



Black powder coated 4104 Brushed antique brass 4108 Crude steel 4117 Brushed stainless steel 4101

For wire heads MOQs apply.

Neck options



V-cut and Sloped neck cap painted V-cut and Sloped neck cap fabric covered

Seam options



Raised seam Patchwork seam Straight seam U-shape seam



Dual fitting



The Dual fitting makes it possible to change between ABS, FRP or wooden arms with button fitting and wooden arms with push-and-pull fitting. This fitting is also suitable for mannequins of other ranges.

Hook for handbags



The hook for handbags is available for FRP and wooden hands.

Arm options



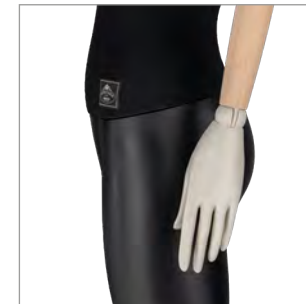
Wooden arms



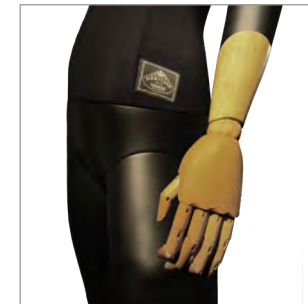
FRP arms painted



FRP arms frosted



Wooden arms with FRP hands



FRP arms with wooden hands



Articulated ABS arms

Articulated ABS arms



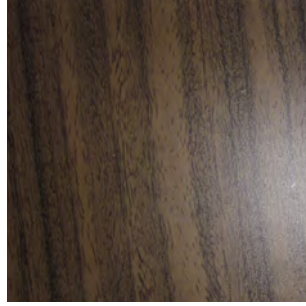
The articulated ABS arms can be used for any adult mannequin or torso. The upper and lower arms are identical for both male and female mannequins, only the hands will be adapted to the particular gender.

Behind the shoulder flap there is a bracket with an Allen key. Once the arms have been brought into the desired position, the screws in the joints can be locked with the key, thus fixing the position. Afterwards, the Allen key can be put back behind the flap for storage.



HERITAGE X OPTIONS

Materials



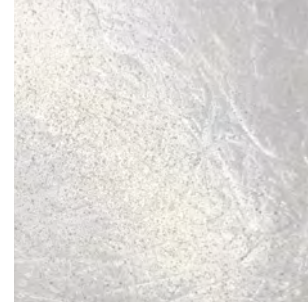
Floating finish dark wood
3103



Concrete
3410



Papier-mâché
3428

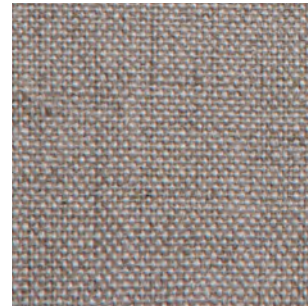


Frosted white smooth
high gloss
3425S

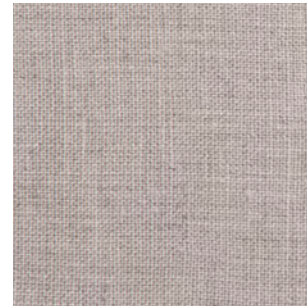
Fabrics



Cream white burlap
4808



Beige canvas
4811



Beige
4810

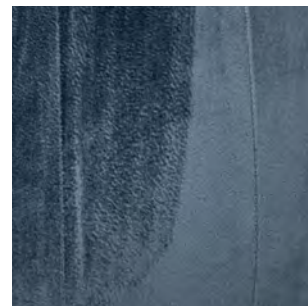


Cream white
4809

Fabrics



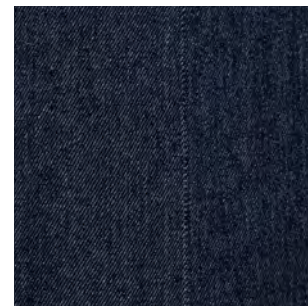
Wool gray
4789



Velvet ocean blue
4796



Cotton gray
4778



Denim dark blue
4757



This is a small selection of materials and fabrics. Further options on request.