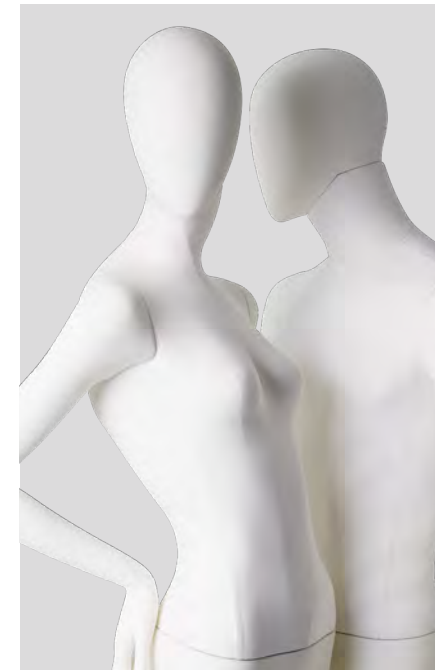




HERITAGE X



Our HERITAGE X range is a contemporary take on the popular mannequin-bust hybrid. These mannequins are not only visually striking, but practical tools for displaying clothing. Make HERITAGE X your own by selecting your favorite material for the torso and color for the arms and legs. Customize these poses even further by adding articulated wooden arms which are available in a variety of colors. With HERITAGE X, the possibilities are endless.

HERITAGE X



HRTF-08
Wooden arms

HRTF-05
Wooden arms

HRTF-01
Wooden arms

HRTF-06
Wooden arms

HRTF-02
Wooden arms



HRTF-07
Wooden arms

HRTF-12
Wooden arms



HRTF-11
Wooden arms
incl. intake for safety steel cord



Fabric covered head
Flora-201020
Natural cotton beige



Wooden head
Mylee-201021
Beech wood original



All heels are removable.



GTDH-B
standard



GTDH-A
on request

Measurements	EU	US
Height	189,5 cm	74.5"
Bust	83 cm	32.5"
Waist	61 cm	24"
Hip	88 cm	34.5"
Heel height	10 cm	4"

HERITAGE X



HRTF-01
FRP arms



HRTF-06
FRP arms



HRTF-02
FRP arms



HRTF-03
FRP arms



HRTF-04
FRP arms



100 cm / 39.5"

HRTF-05
FRP arms



HRTF-08
FRP arms



HRTF-07
FRP arms



HRTF-09
FRP arms



HRTF-12
FRP arms



57 cm / 22.5"

135 cm / 53"

45 cm / 17.5"

HRTF-11
FRP arms
incl. intake for safety steel cord



Fabric covered head
Flora-201020
Natural cotton beige



Wooden head
Mylee-201021
Beech wood original

All heels are removable



GTDH-B
standard



GTDH-A
on request

Measurements	EU	US
Height	189,5 cm	74.5"
Bust	83 cm	32.5"
Waist	61 cm	24"
Hip	88 cm	34.5"
Heel height	10 cm	4"

HERITAGE X OPTIONS

Wooden arms



Clear matt 4214 Lotus gray 4215 Lotus raw 4217 Distressed raw 4218 Distressed 4211

Wooden arms



Whitewashed 4209 Antique white 4208 Distressed white 4220 Distressed white-L 4221

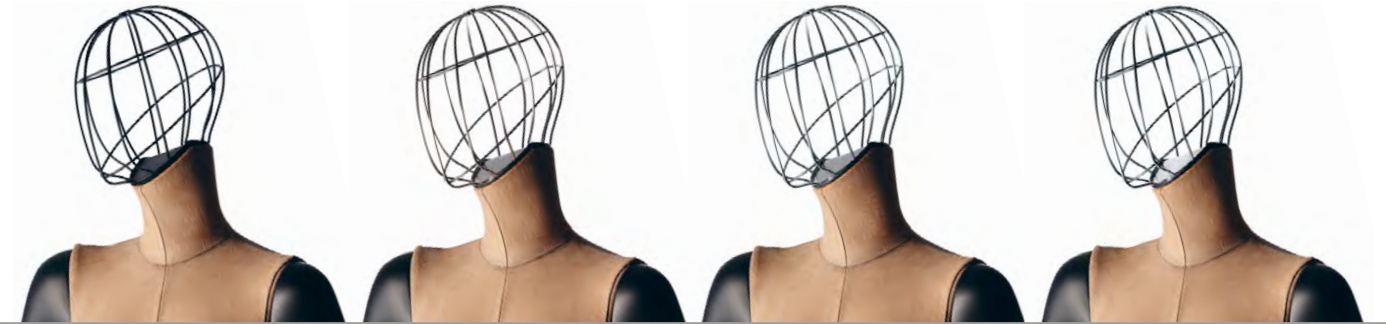
Wooden arms



Dark 4201 Black 4206 Antique black 4207 Distressed black 4219

All wooden arms are processed by hand which can cause deviations in surface or color. MOQs apply.

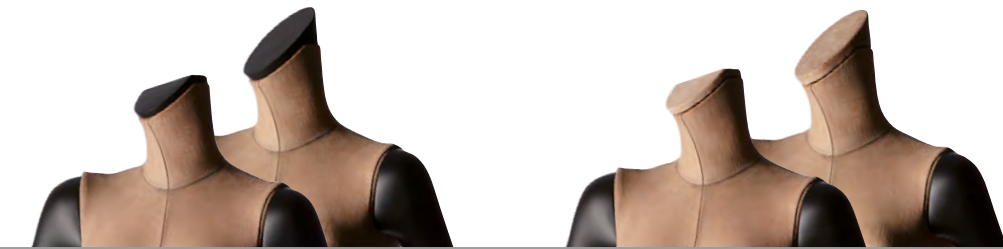
Wire heads



Black powder coated 4104 Brushed antique brass 4108 Crude steel 4117 Brushed stainless steel 4101

For wire heads MOQs apply.

Neck options



V-cut and Sloped neck cap painted V-cut and Sloped neck cap fabric covered

Seam options



Raised seam Patchwork seam Straight seam U-shape seam



Dual fitting



The Dual fitting makes it possible to change between ABS, FRP or wooden arms with button fitting and wooden arms with push-and-pull fitting. This fitting is also suitable for mannequins of other ranges.

Hook for handbags



The hook for handbags is available for FRP and wooden hands.

Arm options



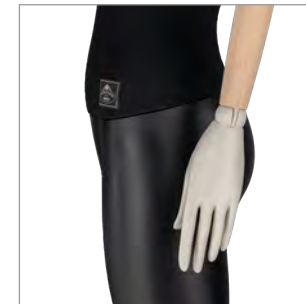
Wooden arms



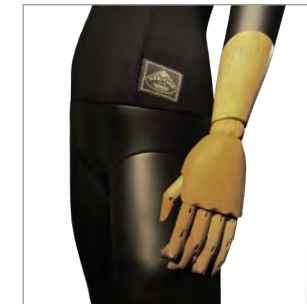
FRP arms painted



FRP arms frosted



Wooden arms with FRP hands



FRP arms with wooden hands



Articulated ABS arms

Articulated ABS arms



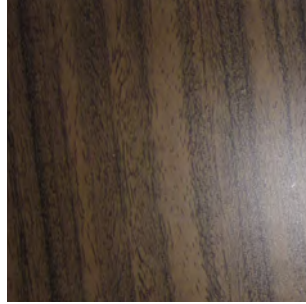
The articulated ABS arms can be used for any adult mannequin or torso. The upper and lower arms are identical for both male and female mannequins, only the hands will be adapted to the particular gender.

Behind the shoulder flap there is a bracket with an Allen key. Once the arms have been brought into the desired position, the screws in the joints can be locked with the key, thus fixing the position. Afterwards, the Allen key can be put back behind the flap for storage.



HERITAGE X OPTIONS

Materials



Floating finish dark wood
3103



Concrete
3410



Papier-mâché
3428

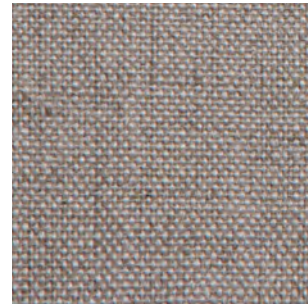


Frosted white smooth
high gloss
3425S

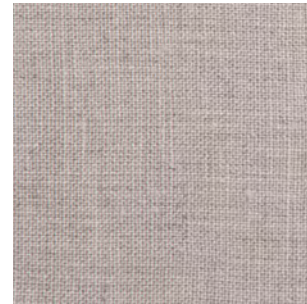
Fabrics



Cream white burlap
4808



Beige canvas
4811



Beige
4810



Cream white
4809

Fabrics



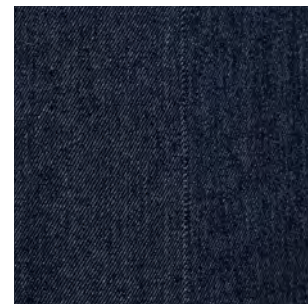
Wool gray
4789



Velvet ocean blue
4796



Cotton gray
4778



Denim dark blue
4757



This is a small selection of materials and fabrics. Further options on request.